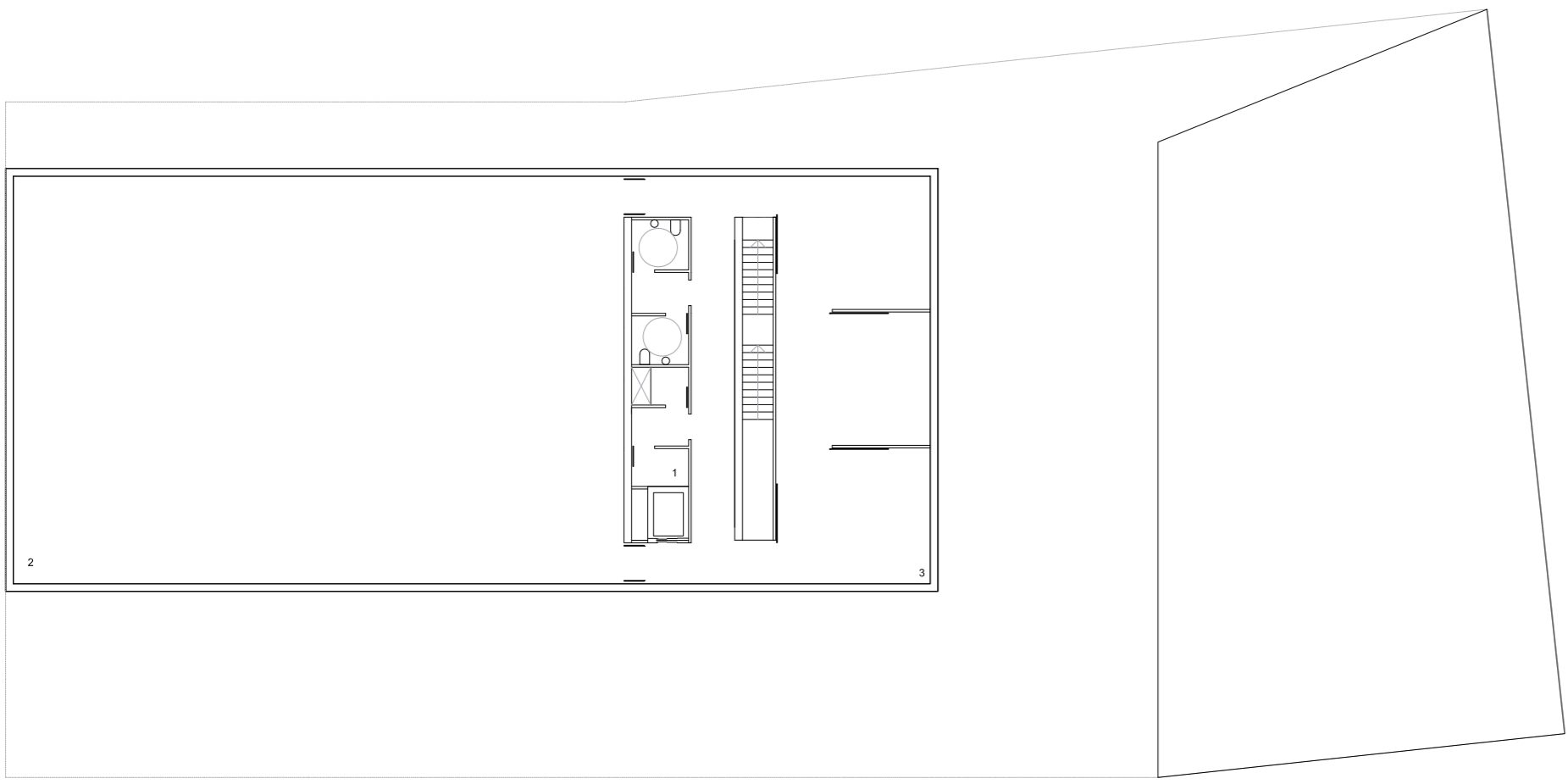


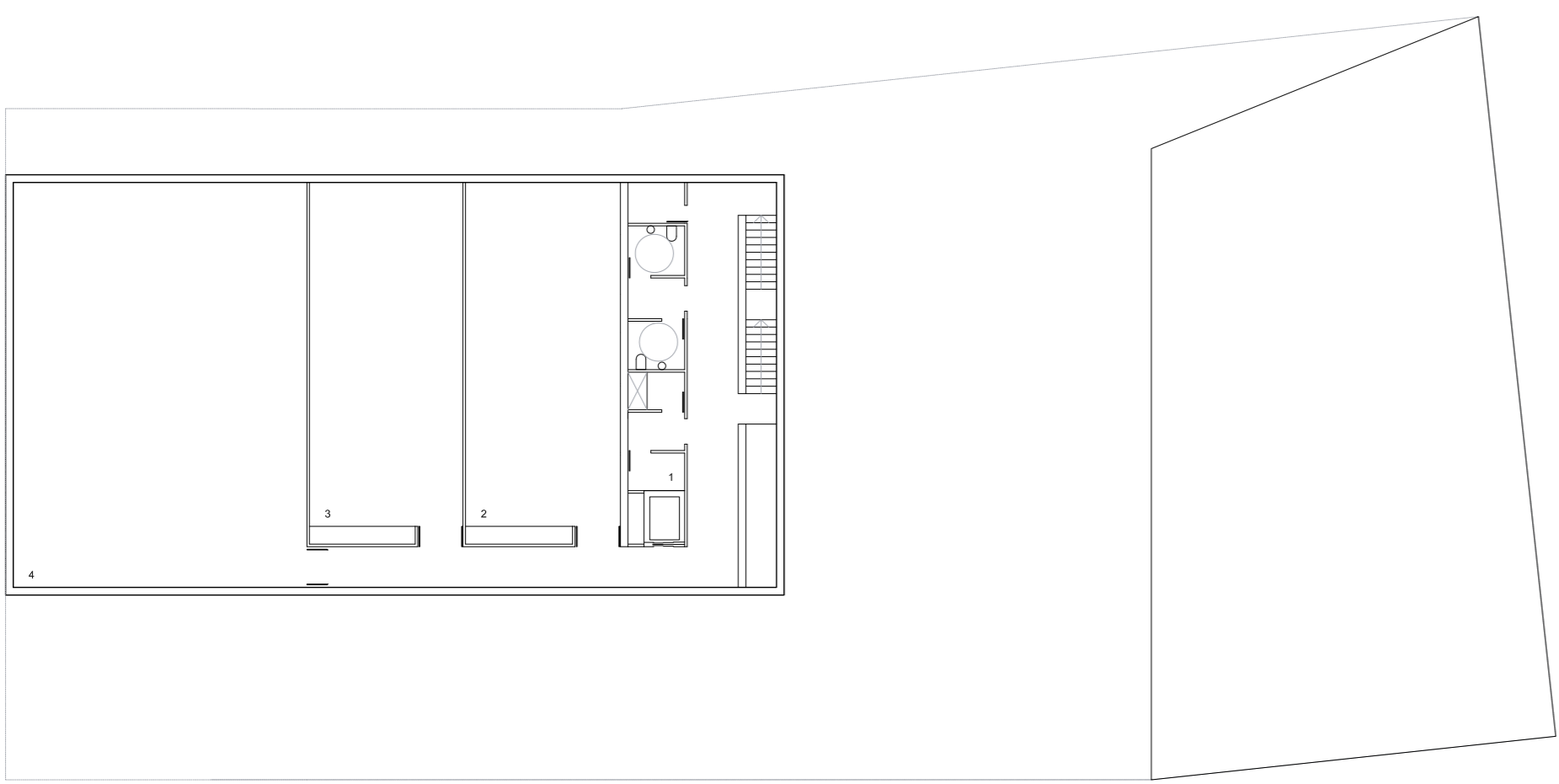
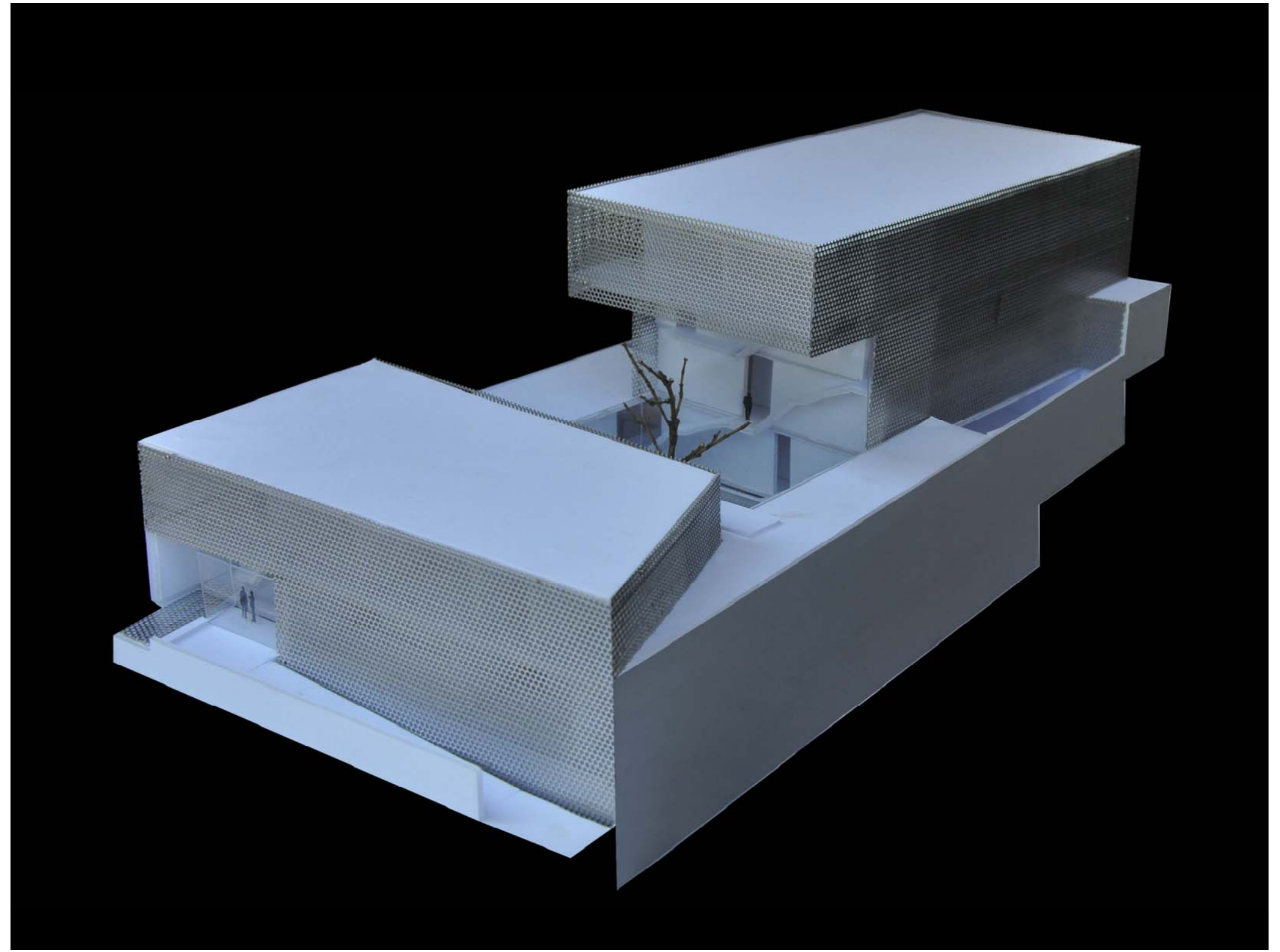
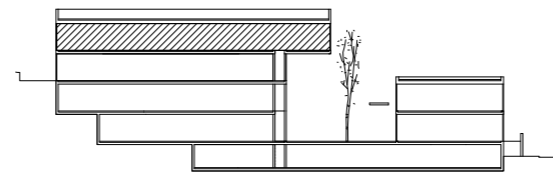
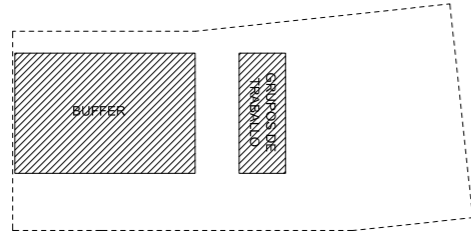
1/250 10



planta 3

cota +67,50

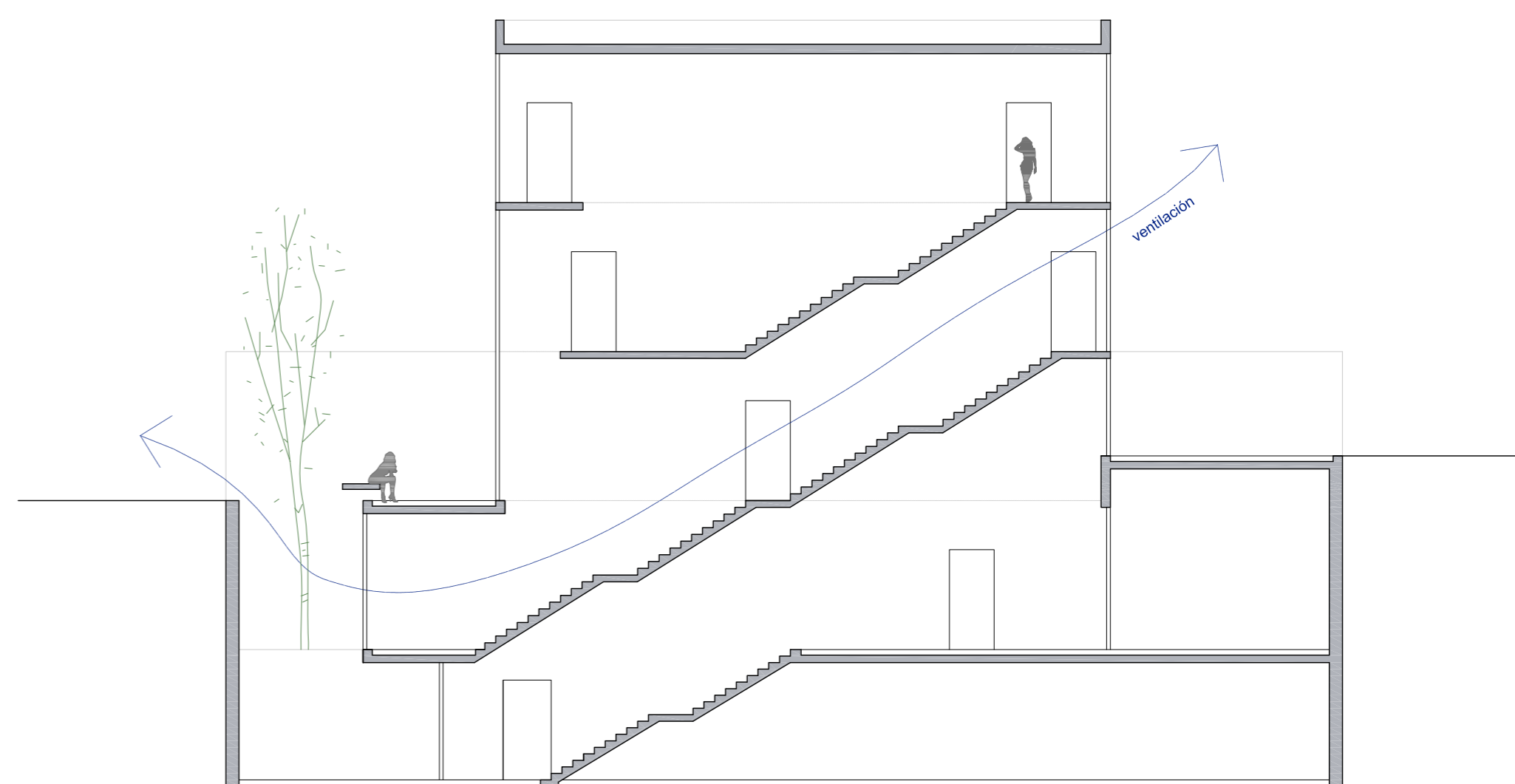
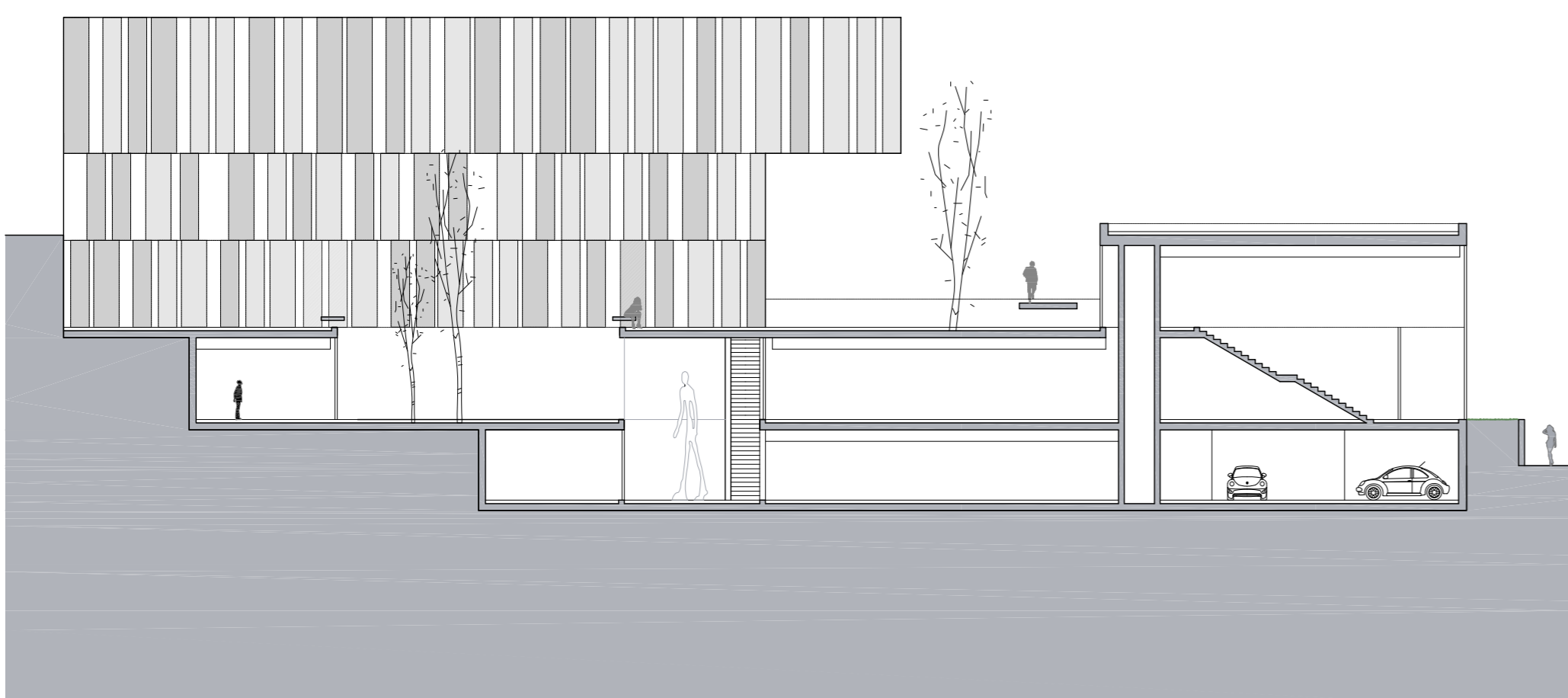
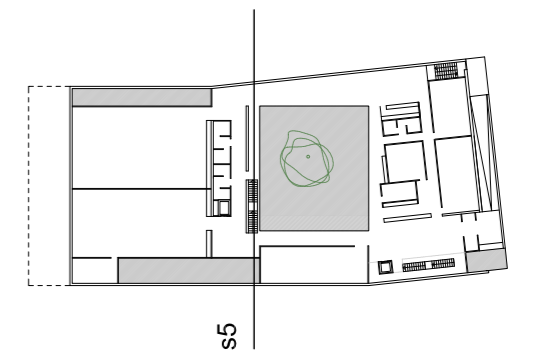
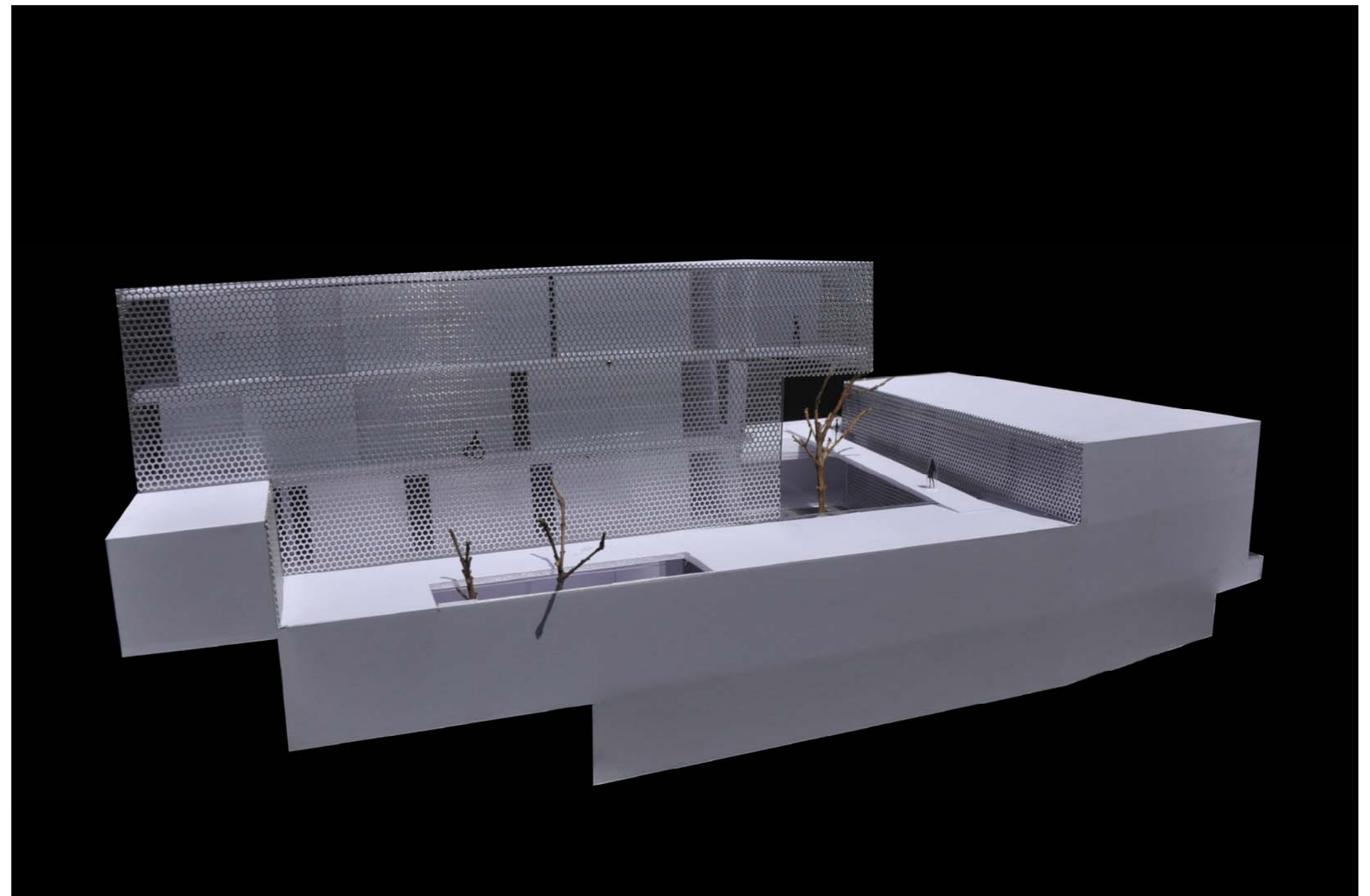
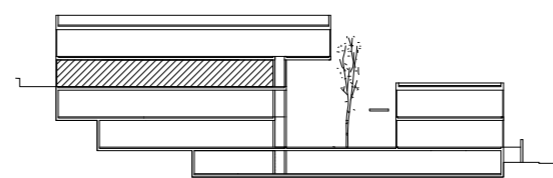
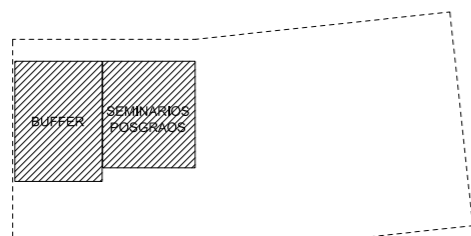
1. núcleo do volume alto	30 m ²
2. buffer	362 m ²
3. espazo aberto con postos de traballo	85 m ²
superficie construída total	600 m ²



planta 2

cota +63,50

1. núcleo do volume alto	30 m ²
2. despexos	87 m ²
3. sala de servizos	87 m ²
4. buffer	194 m ²
superficie construída total	485 m ²



1/150 10